

ELDRIDGE ELECTRIC AND WATER UTILITY BOARD

December 5, 2023
5:00 pm
City Hall, 305 N. 3rd Street

1. Call to order
2. Public Comment
3. Approval of Agenda
4. **Approval of Minutes –November 21, 2023**

5. Water Department – Brock Kroeger
 - A. **ISG Engineering Proposal**
 - B. **Consideration of Resolution 2023-07 E&W Establishing an increase in water rates**
 - C. **Water Test Results**
 - D. Department Update

6. Financial
 - E. **Consideration to Approve Bills Payable**

7. Electric Department – Mike Anderson
 - F. PCA Update
 - G. Department update

8. Administrative –
 - H. **Consideration of Resolution 2023-08 E&W Approving changes to the regularly scheduled meeting dates for 2024**
 - I. Discussion about an in-person meeting with CMPAS
 - J. Department Update

9. Adjournment

NEXT REGULAR MEETING Tuesday, December 19, 2023 at 5:00pm

The regular meeting of the Eldridge Electric and Water Utility Board was called to order at 5:02 P.M. on November 21, 2023, at Eldridge City Hall.

Board members present were Brock Kroeger, Mike Anderson, Barb O'Brien, Paula Steward, and Jim Skadal. Also, present Jacob Rowe and Jody Coffman. Visitors Nevada Lemke.

Public Comment- None

Motion by Anderson, second by Steward to approve the agenda All ayes.

Motion by Steward, second by O'Brien to approve the minutes from November 7, 2023. All ayes.

FINANCIAL – Motion by Kroeger to approve bills payable in the amount of \$52,269.18, second by Steward. All ayes.

ELECTRIC – There was an outage on 11/16/23 at E Lincoln Rd. the Golf Course Lift Station., from 6:35 am to 7:20 am. The cause was wildlife contact. One customer was affected. A second outage was reported. 11/18/23 at the same address from 7:45am to 8:30 am. The cause was wildlife contact. One customer was affected.

Rowe updated the Board on the PCA.

Department update: The crew has been setting up streetlights in the Grunwald addition. The crew changed out a 3-phase pole by the Coop. They have also been installing new services. D. Eagle started on 11/20/23.

WATER- The Board discussed the second phase of the rate increase for the water department. Rowe will bring a Resolution to the Board at the next meeting.

Department update: The crew has been repairing hydrants. They did the last hydrant flushing. We are still waiting for the DNR response on the lost lead samples. The crew will be doing a PFAS test.

ADMINISTRATION-

Department update: Rowe gave an update on the CMPAS contract.

Motion by Anderson to adjourn the meeting at 5:21 P.M., second by O'Brien. All ayes.

Design, Bidding, and Inspection Services for 16th Avenue Water Tower

ELDRIDGE MUNICIPAL UTILITIES | NOVEMBER 21, 2023



Architecture
Engineering
Environmental
Planning
ISGInc.com



FOR:

Eldridge Municipal Utilities
305 North 3rd Street
Eldridge, IA 52748

Jake Rowe

Utility Director
563.210.4482
jrowe@cityofeldridgeia.org

FROM:

ISG

217 East Second Street + Suite 110
Des Moines, IA 50309

Lenny Larson, PE

Water/Wastewater Group Leader
515.243.9143
Lenny.Larson@ISGInc.com

Michael Novitzki

Development Strategist
651.373.9915
Michael.Novitzki@ISGInc.com

SERVICES

Architecture

Architecture

Interior Design

Landscape Architecture

Planning

Engineering

Civil

Drone

Electrical

Land Surveying

Mechanical

Municipal

Refrigeration

Structural

Technology

Telecommunications

Transportation

Water/Wastewater

3D Scanning

Environmental

Assessments + Review

Geographic Information Systems

Permitting + Compliance

Planning + Feasibility

Testing + Monitoring

Planning

Development

Engagement

Funding

Planning

Project Evaluation

**We exist to *make a difference*,
to make tomorrow better than today for our
communities, our clients, and each other.**

ISG'S MISSION STATEMENT

Table of Contents

Project Profiles	2
Firm Overviews	4
Organizational Chart + Project Team	5
Project Understanding	10
Compensation	15
System Improvement Opportunities	16

NOVEMBER 21, 2023

Jake Rowe

Utility Director

Eldridge Municipal Utilities
305 North 3rd Street
Eldridge, IA 52748

563.210.4482
jrowe@cityofeldridgeia.org

70+ Years

OF FIRM EXPERIENCE
PROVIDING WATER SOLUTIONS

**Water Tower
Reconditioning**

EXPERIENCE ACROSS
THE MIDWEST

Team Familiarity

FOR BETTER
SOLUTIONS FASTER

**RE: Professional Design, Bidding, and Inspection Services
Proposal for 16th Avenue Water Tower
Eldridge, Iowa**

ISG

Jake,

As Eldridge Municipal Utilities (EMU) seeks design and bidding services for the reconditioning project, in Eldridge, Iowa, ISG and its chosen partner, KLM engineering, Inc. (KLM), stand ready and eager to assist. With the team's firm understanding of your requirements and desired outcomes, we offer EMU the following advantages:

COLLABORATIVE + EXPERIENCED TEAM

Currently, ISG has 20+ in-house water/wastewater team members, backed by a multi-disciplinary team of architects, engineers, planners, and environmental specialists who understand the needs of municipalities and public works facilities. KLM has a strong record of consistently delivering refurbished water tower projects over the past 27 years, and together with ISG, over a dozen projects in the last five years. Recently, the ISG and KLM team successfully completed several water tower projects across Iowa with towers ranging in size from 50,000 to 500,000 gallons. Our blended team will bring insight, proven processes, and clear communication for all stakeholders.

PROJECT FAMILIARITY

With KLM having performed an evaluation of 16th Avenue water tower in 2023, our team comes prepared with a firm understanding of the requirements to bring the tower up to current American Water Works Association (AWWA), Iowa Department of Natural Resources (DNR), and Occupational Safety and Health Administration (OSHA) standards and codes.

LISTEN-FIRST APPROACH

Our team's listen-first approach means we will ask right questions, understand challenges, and respond with innovative ideas to meet, if not exceed, EMU's expectations. ISG and KLM will guide your team to make decisions with your goals for efficiency, quality, and water safety in mind.

Above all else, ISG and KLM will serve as a dedicated project ally, advocate, and partner committed to overall project success. This means not only providing the expertise you need, but by gaining trust with timely deliverables, and offering guidance along each step of the way. We look forward to providing you responsive service and right-sized solutions.

Sincerely,

Lenny Larson, PE
Water/Wastewater Group Leader

Michael Novitzki
Development Strategist

Project Profiles

KLM has planned, designed, and refurbished water towers for the past 27 years. The longevity of KLM's coatings system ensures return-on-investment for clients. Featured below is a recent ISG and KLM project partnership successfully delivered for the City of Rogers, Arkansas.



CITY OF ROGERS, AR

Inspection Services

Reconditioning | 2021

Project Length: 14 Weeks

Project Cost: \$127,155

Design Services | 2020

Project Length: 1 Week

Project Cost: \$13,000

Evaluation | 2020

Project Cost: \$7,500

CONTACT

Stephen Ponder

479.621.1142



KLM exhibited exceptional professionalism and outstanding technical competency regarding corrosion engineering and coating systems knowledge during the design and construction phases for the rehabilitation of an aging 2 MG elevated water storage tank. Several coating system were evaluated to provide optimal value and longevity for our project. KLM identified many improvements needed to bring the aging tank into compliance with the most current AWWA and OSHA standards. KLM's network of quality contractors helped generate many more qualified bidders than we had been able to attract in the past. During construction the KLM team performed diligently, inspecting all repairs, preparatory work, and coatings application.

The project was completed within budget and on time with a strong sense of confidence that it was done well, providing a durable product for many years to come.

Brian Sartain, PE

Director of Engineering
Rogers Water Utilities



KLM PROJECTS

The following shows a list of reconditioning projects completed over the last five years.

DES MOINES, IA

4.1 MG Tenny Standpipe

Owner: City of Des Moines
 Client: Des Moines Water Works
 Contact: Bob Jolly
 515.802.9019

GILMORE CITY, IA

0.1 MG Single Pedestal

Owner: City of Gilmore City
 Client: City of Gilmore City
 Contact: Melissa Ubben
 515.373.6326

LIVERMORE, IA

0.125 MG

Owner: City of Livermore
 Client: City of Livermore
 Contact: Janet Berte
 515.379.1094

WAHPETON, IA

0.15 MG Single Pedestal

Owner: City of Wahpeton
 Client: City of Wahpeton
 Contact: Carrie Funk
 712.337.3522

ANDOVER, MN

1 MG Hydropillar

Owner: City of Andover
 Client: City of Andover
 Contact: David Berkowitz
 763.755.5100

EAGAN, MN

1 MG Hydropillar

Owner: City of Eagan
 Client: City of Eagan
 Contact: Jon Eaton
 651.675.5215

FARMINGTON, MN

1.5 MG Hydropillar

Owner: City of Farmington
 Client: City of Farmington
 Contact: Steve Arndt
 651.280.6800

HASTINGS, MN

0.75 MG Hydropillar

Owner: City of Hastings
 Client: City of Hastings
 Contact: Ryan Stempki
 651.300.4267

HILL CITY, MN

0.75 MG Single Pedestal

Owner: City of Hill City
 Client: City of Hill City
 Contact: George Capser
 218.244.0440

MAPLE GROVE, MN

2 MG Hydropillar

Owner: City of Maple Grove
 Client: City of Maple Grove
 Contact: Jay Murzyn
 763.494.6358

PLYMOUTH, MN

2 MG Toro Ellipsoidal

Owner: City of Plymouth
 Client: City of Plymouth
 Contact: Michael Thompson
 763.509.5501

VALLEY CENTER, KS

0.75 MG Composite

Owner: City of Valley Center
 Client: Professional
 Engineering Consultants
 Contact: Ryan Glessner
 316.262.2691

Firm Overviews

TRUE EXPERTISE + WORKING INGENUITY



ISG has a rich history, that extends over 50 years, of building trusting relationships with clients, stakeholders, and the community. As a multi-disciplinary firm that is 100% owned by employees, ISG serves numerous business units and fosters strong collaboration between all disciplines, providing clients a diverse knowledge base, high level of creativity, and broad perspective. ISG's business philosophy is centered around building relationships and constantly adding value through new and creative technologies, professionals, and ideas. ISG's flexibility makes it possible; our focus and innovative solutions make it happen.



Check it out!
bit.ly/publicworksbrochure_isg

ISG CORE VALUES

Dynamic

Change is the only constant.
We embrace and influence change.
We will be better tomorrow
than we are today.

Together

We are a team. We value each other,
challenge each other, and build each
other up. Together, we will
achieve success.

Respect

We understand that respect is earned,
not given. We will work to earn it.

Responsive

We are quick to respond.
We will proactively communicate
and move forward with a
sense of urgency.

Empathy

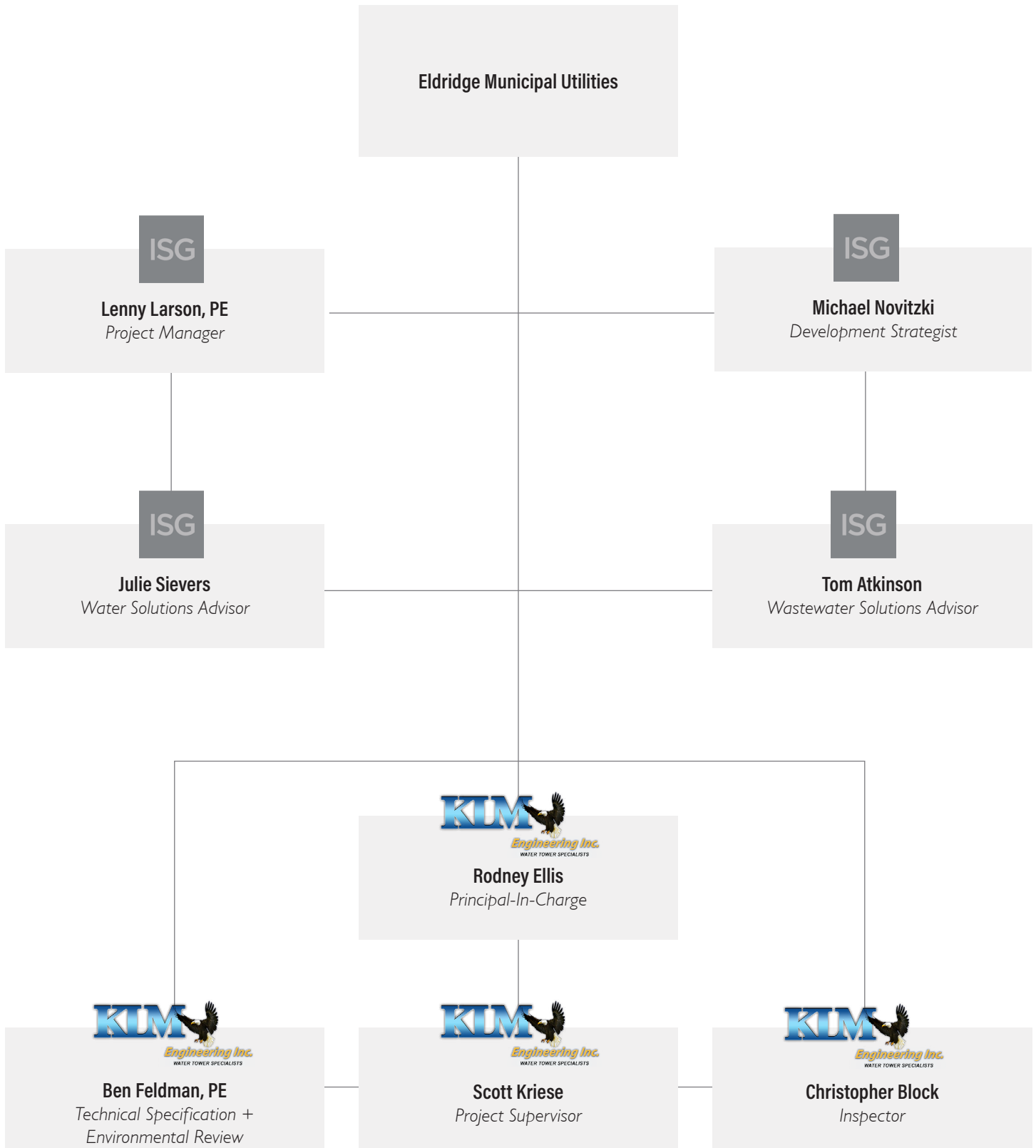
We commit to understanding
the context, needs, and goals of
others so that we can better serve.
By thinking like our client, we will
win more than our fair share.



KLM BACKGROUND

Founded in 1995, KLM Engineering, Inc. is an inspection firm. On average, KLM completes over 150 water storage projects each year for clients across the United States. KLM specializes in design and structure modifications based upon years of employment with tank fabricators, erectors, and consulting engineers. Our expertise includes examining existing tanks for corrosion, structure integrity, and fitness for continued service, performed by professional engineers with practical knowledge of current designs and code requirements.

Organizational Chart + Project Team





**Lenny
Larson, PE**
Project Manager

AWWA Member

Iowa Rural Water
Association (IRWA)
Member

Iowa Engineering Society
(IES) Member

Water Environment
Federation (WEF)
Member

IA License P24128



**Julie
Sievers**
Water Solutions Advisor

AWWA Member

IRWA Member



Learn More About Julie!

bit.ly/julieSievers__specialist

Lenny assists in leading ISG's water/wastewater group, providing direction to projects ranging from municipal to industrial clients. He manages the development of pretreatment agreements, Preliminary Engineering Reports (PER), acquisition of grants and loans, project design, preparation of final plans and specifications, and construction administration support for water and wastewater projects. Lenny has helped various Iowa communities with his expertise in design, project management, and delivery of successful new and renovated water and wastewater treatment facilities.

With his ability to translate complex system solutions into effective implementation, Lenny will help create streamlined understanding for timely project completion.

Julie is considered an expert in water operations and design guidelines by the Iowa DNR. In addition to her role at ISG as Senior Water Solutions Specialist, she is partnering with the Iowa DNR to provide surface water training for all State of Iowa operators. She also provides consulting and training for operators of water/wastewater plants.

Julie brings 37+ years of expertise and understanding of water/wastewater facilities, overall operator services, permitting, and strategies to optimize water project plans and operations. With a focus on solutions that positively impact natural resources, she applies her expertise in Iowa DNR and Environmental Protection Agency (EPA) permitting and compliance to assist cities with maintaining compliance and streamlining project approvals.

EDUCATION

Bachelor of Science in Civil Engineering
University of Iowa
Ames, IA

PROJECT EXPERIENCE

- City of Rogers, AR
Reconditioning of 2.0 MG Toro Ellipsoidal
- City of Forney, TX
New construction of 1 MG Composite
- City of Emporia, KS
Reconditioning of 1 MG Composite
- City of Jamaica, IA
Reconditioning of 0.5 MG Single Pedestal
- City of Lawrence, KS
Reconditioning of 1.5 MG East GSR
Reconditioning of 1.5 MG West GSR

EDUCATION

Bachelor of Science in Chemistry;
Bachelor of Science in Biology
Morningside College
Sioux City, IA

PROJECT EXPERIENCE

- Eldridge Municipal Utilities
*Water Treatment Facility
Evaluation + Training*
- City of Storm Lake, IA
Water System Operations Support
- City of Clarion, IA
Water System Improvements
- City of Fairfax, IA
Water System Improvements
- City of Pocahontas, IA
Water System Improvements + Well
- Southern Iowa Rural Water Association
Water Operator Training



Tom Atkinson
Wastewater Solutions Advisor

AWWA Member

Iowa Water Environment Association (IWEA) Member



Michael Novitzki
Development Strategist + Client Relations

AWWA Member

MN Chapter Manufacturer's Association Council Board Member

Industry Speaker

Tom has nearly 20 years of experience in Iowa environmental regulation and the water/wastewater industry. Having spent 17 years working at the Iowa DNR, he has a deep understanding of DNR requirements, standards, and regulations. Tom leverages his water/wastewater policy experience to assist in guiding facility developments and improvements to protect clean, safe water resources for communities. He also uses his regulatory knowledge and experience to train water facility operators and provide water solutions for various projects.

Tom is a mentor and educator to ISG's multi-disciplinary team members and external stakeholders. A committed client partner and environmental steward, he identifies options to achieve optimal balance between budgetary, consumer, policy, and environmental needs.

With over six years in the public works industry with an emphasis in potable water, Michael builds long-term relationships by using an empathetic approach and communicating to earn trust. Understanding each client is different and every project has a unique story, he takes the time to learn the importance behind each project to ensure it is set up for success.

Michael is an expert in cost analysis, cost comparisons, and water tower maintenance plans. He has worked with municipalities across the nation to provide cost-effective solutions that achieve maximum coating longevity. With connections across the state, as an active member of the American Water Works Association, and having presented on water tower maintenance best practices at IRWA events, he has a firm understanding of water infrastructure trends.

EDUCATION

Bachelor of Arts in Biology
Central College
Pella, IA

PROJECT EXPERIENCE

- Eldridge Municipal Utilities
Water Treatment Facility Evaluation + Training
- City of Storm Lake, IA
Water + Wastewater Operations Support
- City of Rockwell, IA
Water Reclamation Facility Improvements
- Multiple Municipal + Industrial Facilities
Operator Support
- City of Hartford, IA
Wastewater System Improvements

EDUCATION

Masters in Business Administration
Opus College of Business
University of St. Thomas
St. Paul, MN

PROJECT EXPERIENCE*

- Eldridge Municipal Utilities
10-Year Service Agreement + Mixing Systems
- City of Burlington, WI
Reconditioning of 2.0MG GSR
- City of Rogers, AR
Reconditioning of 2.0MG Toro Ellipsoidal
- City of Farmington, MN
Reconditioning of 1.5MG Hydropillar
- City of South Bend, IN
Reconditioning of 1.5MG Tower
- City of Gibbon, MN
0.080 MG New Tower Feasibility Study

*Completed while employed at KLM



Rodney Ellis

Principal-In-Charge

NACE/AMPP Certified

AWS Weld Inspection
Certified

Certified Competent
Climber

OSHA 10

Federal Department of
Natural Resources

EDUCATION

Mount Senario College
Ladysmith, WI

PROJECT EXPERIENCE

City of Valley Center, KS
Reconditioning of 0.75MG Composite

Village of Dresser, WI
Reconditioning of 0.2MG Double Ellipsoidal

City of Farmington, MN
Reconditioning of 1.5MG Hydropillar

City of Baxeter, MN
Reconditioning of 0.75MG Hydropillar

City of St. Cloud, MN
Reconditioning of 1 MG Hydropillar

City of Chatfield, MN
Reconditioning of 0.2 MG Ground Tank

City of Hastings, MN
Reconditioning of 0.75 MG Hydropillar

City of Goodview, MN
Reconditioning of 0.1 MG Single Pedestal



**Ben
Feldman, PE**

Civil Engineer

NACE/AMPP Certified

OSHA 10

EDUCATION

Civil Engineering + Business Management
University of Minnesota
Minneapolis, MN

PROJECT EXPERIENCE

City of Hastings, MN
Reconditioning of 0.75MG Hydropillar

City of Hinckley, MN
Reconditioning of 0.15MG Double Ellipsoidal
Reconditioning of 0.3MG Single Pedestal

City of Delavan, WI
Reconditioning of 0.5MG Single Pedestal

City of West Chicago, IL
Reconditioning of 0.5MG Booster Reservoirs

City of Lawrence, KS
Reconditioning of 1.5 MG Ground Tank

City of Goodview, MN
Reconditioning of 0.1 MG Single Pedestal

City of Thief River Falls, MN
Reconditioning of 0.5 MG Single Pedestal

City of Clarkfield, MN
Reconditioning of 0.15 MG Elevated Tank



**Scott
Kriese**

Project Supervisor

NACE/AMPP Certified
Level III, No. 11236

OSHA 10

Certified Competent
Climber

PROJECT EXPERIENCE

City of Neodesha, KS
Reconditioning of 0.2 MG Single Pedestal

City of Valley Center, KS
Reconditioning 0.75 MG Composite

Jackson County PWSD #1, MO
*Reconditioning of 1.5 MG
Elevated Water Tower*

Village of Dresser, WI
Reconditioning of 0.2 MG Double Ellipsoidal

City of Farmington, MN
Reconditioning of 0.15 MG Hydropillar

City of Baxter, MN
Reconditioning of 0.75 MG Hydropillar

City of St. Cloud, MN
Reconditioning of 1 MG Hydropillar

City of Sioux Falls, SD
Reconditioning of 1.5 MG Composite



**Christopher
Block**

**On-Site
Resident Inspector**

NACE/AMPP Certified
Level III, No. 69860

SSPC 14

C3 & C5 Lead

MODH Lead

Abatement Supervisor
No. 100614-300002890

CAS Full Intern

OSHA 30

PROJECT EXPERIENCE

City of Valley Center, KS
Reconditioning of 0.75 MG Composite

City of Gardner, KS
Reconditioning of 0.4 MG Hydropillar

City of Topeka, KS
New construction of 1 MG Composite

City of Rogers, AR
Reconditioning of 2 MG Toro Ellipsoidal

City of Neodesha, KS
New construction of 2 MG Composite

City of Lawrence, KS
Reconditioning of 1.5 MG Ground Tank

City of Plaza, ND
New construction of 0.075 MG Hydrocone

City of Devils Lake, ND
Reconditioning of 0.5 MG Oblatoid

Project Understanding

We understand that EMU is planning to recondition the 750,000-gallon (0.75 MG) 16th Avenue water tower. Key project team members were brought together to discuss the 2023 KLM evaluation report and records maintained by KLM. This proposal outlines the services required to bring the tower into compliance with the Iowa DNR, AWWA, and OSHA codes and standards. Our inspection services will ensure the contractor is performing the work according to the project manual.

Within the collaborative team of ISG and KLM each member has a specific, defined role and the demonstrated expertise to accomplish project goals. We will employ our proven best practices working together to ensure project success.

WATER TOWER EXPERTISE

The ISG and KLM team will work with EMU to deliver a successful reconditioning project applying our extensive knowledge and lessons learned from similar past projects. Below are some of the critical areas of importance that will be addressed:

- + Today's protective coating systems are designed to last 25–30 years with only minor maintenance. Tight project specifications and full-time inspections give the coating systems the opportunity to realize their intended service life.
- + The tower-specific submittals will be reviewed to verify conformance to the specifications, AWWA, OSHA, and Iowa DNR regulations. ISG and KLM will respond in writing regarding the acceptance of the submittals.
- + ISG and KLM propose to prepare a technical specification package designed for water tower reconditioning. Our experience has shown that the more comprehensive the specification is, the more likely the project will be completed on time, on budget, with quality workmanship. The technical specifications mitigate requests for change orders during reconditioning.
- + Welding and full-time Association for Materials Protection and Performance (AMPP) Coating Inspections during reconditioning assures that the work performed by the contractor is in conformance with the specifications, to maximize its life expectancy. ISG and KLM's inspectors monitor workmanship during all phases of work to verify the contractor's work meets the specification. Utilizing this process reduces reconditioning cycles over the life of the tower.
- + Our project administration and inspection services provide a buffer between the project specifications and the real-world challenges that can negatively affect the project performance. To initiate the project correctly, ISG and KLM's project management team will assure that a qualified contractor is retained at an appropriate cost.

PROJECT SCHEDULE



**Design Services +
Submittal Reviews**
Completed in 30 days



**Construction Management
+ Inspection Services**
Completed by 2024



Warranty Inspection
ROV, completed per Agreements



DESIGN SERVICES

The ISG and KLM team will perform the following differentiated services:

- + Meet with the Owner to review plans and specifications | ISG
- + Produce preliminary and completed copies of the specifications for the Owner | ISG
- + Provide an updated cost estimate | KLM
- + Advertise specifications | ISG
- + Attend and facilitate a mandatory virtual pre-bid meeting | ISG
- + Respond in writing to bidder questions | ISG + KLM
- + Tabulate results for Owner's | ISG
- + Evaluate contractors' bid proposals for conformance to the specification | ISG
- + Make a written recommendation to the Owner on the low, qualified bidder(s) | ISG + KLM
- + Prepare Notice of Award and contract agreement and forward to the Owner | ISG
- + Perform due diligence to determine if funding opportunities are available and applicable | ISG

SPECIFICATIONS

ADVERTISEMENT FOR BIDS | ISG

This section provides a detailed description of the project and meets the requirements for legal advertisements.

INSTRUCTION TO BIDDERS | ISG

This section provides precise instructions to bidders, including the scope of work, insurance, payments, time of completion, bidder qualifications, taxes and permits, legal requirements, performance and payment bonds and other important project information.

BID FORMS | ISG

This section contains the bid proposals, construction time frame, alternate bid proposals, legal requirements, and the bidder and subcontractor qualification forms.

PROJECT REQUIREMENTS | ISG

This section includes a complete description of the project, schedule(s), execution of contract documents, notice to proceed, project meetings, quality assurance, liquidated damages, and legal and technical requirements for executing the scope of work.

TECHNICAL SPECIFICATIONS | KLM

This section details the technical specifications for structural modifications, surface repairs, interior and exterior surface preparation, exterior abrasive blast, containment, disposal of spent abrasives, dehumidification, lettering and logo, submittals, workmanship, unfavorable weather conditions, protective coating and material, repair work, health and sanitary facilities, clean up, ventilation and safety requirements, inspection of work, sterilization of tank interiors, and containment plan.

SUPPLEMENTAL CONDITIONS | ISG

This section supplements or amends the General Conditions and/or other provisions of the Contract Documents.

GENERAL CONDITIONS | ISG

This section includes all the General Conditions designed for water tank reconditioning, such as authority of the Engineer, engineering inspection, modifications, additions and subtractions of scope of work, extensions of time, insurance, and other appropriate items.

CONTRACT DOCUMENTS | ISG

This section provides the form of agreement to be used between the Owner and Contractor.

PAYMENT AND PERFORMANCE BOND | ISG

Bonds for payment and performance are required for this project, as specified by state law.

Appendix A - Photos | KLM

This section includes copies of color photographs. This provides the contractor with a clear perspective of the interior and exterior conditions of the tank and the scope of work involved.

Appendix B - Drawings | KLM

This section includes drawings, which define structural repairs or modifications and welding definitions.

Appendix C - Surface Preparation Requirements | KLM

This section references excerpts from AMPP Standard Practice SP0178-2007 Standard Practice: Design, Fabrication and Surface Finish Practices for Tanks and Vessels to Be Lined for Immersion Services for defining welding and grinding requirements of the structural repair or modifications.

Appendix D - Paint Chip Lead Test Results | KLM

This section contains paint chip test results for lead and chromium used to calculate the risk factor and classification of containment required for conformance with Federal and State Environmental Regulations.

Appendix E - Lettering + Logo (Optional) | ISG

If required, this section includes drawings of any required lettering and logo. Such drawings are to be provided by Owner.

CONSTRUCTION ADMINISTRATION

The project manager (ISG) and project supervisor (KLM) work together on managing the project. The project manager performs the final review of the submittals and will assist the project supervisor, as required.

The project supervisor communicates with the inspector daily to help enforce the project specifications. The project supervisor is the main contact between the contractor representative and the Owner/Engineer.

Tasks	ISG	KLM
Attend pre-construction conference.	✓	✓
Periodically perform on-site review of project's work status and report to the Owner.		✓
Coordinate progress meetings, as necessary.	✓	
Review of meeting minutes.		✓
Scheduling of inspections.		✓
Project close-out administration.	✓	
Establishes warranty date.	✓	✓
Review of inspector's daily documentation.		✓
Process change-orders.	✓	
Prepare monthly payment request forms.	✓	
Review + approve of the contractor's submittals. <i>(Drawing reviews, welder certifications, welder qualifications, welding procedures, coating materials submittal, TLCP sampling plan)</i>		✓

CONSTRUCTION OBSERVATION | KLM

The full-time inspector assigned to this project will be an AMPP Coating Inspector and/or an American Welding Society (AWS) Certified Welding Inspector. All our inspectors have extensive practical experience and knowledge of water storage tank reconditioning. They are experienced sandblasters, painters, climbers, riggers, coating inspectors, welders, and welding inspectors, allowing the inspector to perform their work alongside the contractor to ensure the conformance to the project specification.

FIELD INSPECTIONS

At the start of surface preparation, a pre-construction meeting with the client and contractor will be held to clearly define the role of the engineer and inspector, to discuss the intent of the specifications, and to ensure all parties agree to the scope of work, and expectations regarding the quality of work.

- + Monitor and approval of the structure repairs and modifications for conformance to the specifications.
- + Inspection of the abrasive blasting media and equipment for conformance to the specifications and to prevent contamination of surfaces during surface preparation with moisture and oil or other contaminants.
- + Monitor the paint removal and disposal process for conformance to the specifications and environmental regulations.
- + Monitor the contractors mixing and application of the coats for conformance to the specifications and the coat manufacturer's recommendations.
- + Approve surface preparation samples.
- + Record the contractor's progress for adherence to the construction schedule.
- + Submit daily and weekly inspection reports and photos.
- + Prepare and file copies of the reports on construction activities.
- + Coordinate and review testing of materials for conformance to the specification and environmental regulations.
- + Monitor punch list items and subsequent corrective action by the contractor.
- + Final inspection, substantial completion and project acceptance.

ANTENNA INSPECTION

The EMU is responsible for establishing escrow accounts from each cellular provider prior to the commencement of the rehabilitation. Cellular antenna management fees for engineering and inspections services are paid for by the carriers through these accounts. Antenna management fees during reconditioning are \$9,000 per carrier and \$3,000 for any EMU antennas.

WARRANTY INSPECTION

ISG and KLM propose to perform a two-year Remotely Operated Vehicle (ROV) warranty inspection on the referenced tank prior to the expiration of the performance bonded warranty. The warranty inspection will include an inspection report. Prior to the warranty expiration, KLM will request verification to proceed with the warranty inspection under the terms of this contract. The fixed fee does not include any necessary warranty repair work required.

Deliverables

The EMU owns and retains this documentation. KLM also retains these records for future reference. Deliverables will be submitted electronically, unless hard copies are requested.

- + Professional Engineering Certified Plans
 - + Specifications | ISG
- + State Regulatory Documentation Including Permitting, State Agency or Department of Health, and TCLP Texting and Waste Tracking | ISG + KLM
- + Contractor Submittals | KLM
- + Daily Logs + Weather Logs | KLM
- + Surface Preparation | KLM
- + Daily Digital Photos | KLM
- + Weekly Summary + Progress Meetings | KLM
- + Project Acceptance Certificate | KLM
- + Warranty Inspection Report for the Owner + Contractor | KLM

Compensation

KLM estimates this to be a 13 week project for the contractor and 12 weeks of inspection during the project. KLM will manage the water tower rehabilitation with project supervision, welding inspection, coating inspection, antenna inspection and a ROV warranty inspection, as detailed below.

MAIN SERVICES

Design, Technical Specifications, and Permitting	\$26,000
Construction Administration	\$105,236
TOTAL: Fixed Not-To-Exceed	\$131,236

ADDED SERVICES

Two-Year Warranty Inspection (2025)	\$3,200
Antenna Inspections <i>Any additional days needed for third-party inspection will be charged on a weekly rate of \$9,000.</i>	\$9,000 per carrier \$3,000 per utility/city

REIMBURSABLE EXPENSES

Anticipated reimbursable expenses such as travel, mileage, and printing are included within the compensation listed above.

ADDITIONAL SERVICES

ISG's goal for this proposal, like its services, is to be flexible with accommodating the requirements of this project. Upon request, ISG is able to provide a subsequent proposal to assist with any additional professional design and construction phase services that will be necessary to facilitate this project as it moves forward.

APPLICABLE CONTRACT

The General Terms and Conditions applicable to this Proposal are available at the link below and are hereby accepted and incorporated herein by reference. Upon acceptance of this Proposal, the parties can proceed with the project based on this signed Proposal, per its General Terms and Conditions, or for more complex projects, ISG, at its discretion, will prepare and require the use of an AIA or EJCDC Contract that will govern the project.



General Terms + Conditions
bit.ly/termsconditions_isg

ACKNOWLEDGMENT OF ACCEPTANCE

Accepted this _____ day of _____, 2023.

Company: _____
Print

Name: _____
Print

Title: _____
Print

Signature: _____

This proposal is valid for 30 days.

System Improvement Opportunities

ISG is excited for the opportunity to work with EMU on your water tower reconditioning project. Through our discussion with your staff, ISG understands that EMU would like to pursue possible funding. To understand your options, ISG has considered the following.

FUNDING CHALLENGES + OPPORTUNITIES FOR RECONDITIONING

There are several funding opportunities for drinking water projects. Unfortunately, because water tower reconditioning is considered maintenance it is not typically eligible for funding. However, when part of the reconditioning project includes modifications with improvements to other aspects of the water system, such as improvements to the distribution system, wells, or water plant, that correspond with the Iowa DNR and OSHA guidelines, funding options may become available.

To help utilities and cities obtain funding for reconditioning projects, ISG has worked to help pair distribution system, well, or water plant improvements with water tower reconditioning.

UNDERSTANDING EMU'S WATER SYSTEM NEEDS

ISG has had the opportunity to work with the EMU staff while providing a three-day training session. During that time, ISG learned regular and often daily challenges that staff are facing with the water system, including:

- + Chronic issues with maintaining the minimum level chlorine residuals and nitrification within the eastern portion of the water distribution system and the 16th Avenue water tower
- + Operational challenges at the water plant due to three unique treatment trains
- + Combining the three streams after treatment to produce a consistent treated effluent water to the distribution system
- + The formation of dichloramine and trichloramines at the water treatment plant can create taste and odor issues with the treated water
- + Lack of optimized storage within the existing water towers
- + Understanding the flow of water within the distribution system and towers
- + Minimizing water age while maximizing water quality with the two existing towers
- + Conflicts derived from the age of wells, the decreased capacity of the wells and water treatment plant, and increasing demand. Current issues include:
 - Production of consistent high-quality drinking water to the distribution system
 - A water hammer within the distribution system that can result in stress that results in main breaks and leaks
 - Four wells approaching or exceeding the normal life cycle requiring consideration of planning for improvements or replacements

NEXT STEPS FOR POSSIBLE FUNDING

If EMU wants to pursue funding for reconditioning the 16th Avenue water tower, ISG believes you could include the work as part of a larger water system improvements project that addresses the above concerns that staff are facing. To document and further analyze the components of a larger project, and provide solutions to alleviate current and potential future system challenges, ISG would recommend preparing a Preliminary Engineering Report (PER) that evaluates EMU's water supply, treatment, distribution, and storage system.

WORKING WITH ISG

If chosen to prepare the PER, ISG would work with the EMU to determine a project scope that would maximize funding, include the reconditioning of the 16th Avenue water tower, and address the highest priority concerns. ISG would include a 10-year capital improvement plan within the PER that would identify and provide solutions for the lower-priority concerns that the EMU could plan and budget for in the years to come. The PER would also include an outline of next steps for expansion to accommodate continued growth in population size and water demand.

If EMU would like to pursue next steps for possible funding working with ISG, ISG would welcome the opportunity to discuss this and provide a services and fee proposal for PER preparation and funding assistance.



EXPERTISE

Architecture
Engineering
Environmental
Planning

WORK

Commercial
Education
Food + Industrial
Government + Cultural
Healthcare
Housing
Mining
Public Works
Sports + Recreation
Telecommunications + Energy
Transportation
Water

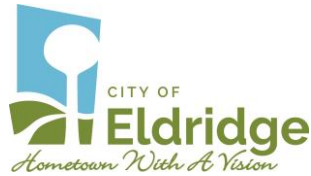


Rogers, AR
Des Moines, IA
Storm Lake, IA
Waterloo, IA
Bloomington, MN
Mankato, MN
Rochester, MN
St. Louis Park, MN
Pierre, SD
Sioux Falls, SD
Green Bay, WI
La Crosse, WI
Milwaukee, WI

ISGInc.com

On January 12, 2017, ISG formally announced its transition of firm ownership to a 100% employee stock ownership plan (ESOP). As a multi-disciplinary firm that started 50+ years ago, ISG has since grown to be a Top 500 Design Firm as recognized by Engineering News-Record (ENR), a Zweig Group Hot Firm, and PSMJ Circle of Excellence recipient, illustrating the progressive increase in talent, expertise, and market share.





Resolution 2023-07 E&W

A RESOLUTION ESTABLISHING AN INCREASE IN WATER RATES TO MEET THE FISCAL OBLIGATION OF THE WATER UTILITY.

WHEREAS, The Board of Trustees of the Eldridge Electric and Water Utility has a responsibility to maintain the financial integrity of the water utility; and

WHEREAS, The Board of Trustees of the Eldridge Electric and Water Utility has considered additional expenses necessary for infrastructure repairs and has determined the water rates should be increased; and

WHEREAS, The water rates have not been increased since September 1st, 2010; and

WHEREAS, An overall rate increase of 10% above the current rates is necessary to maintain the financial integrity of the water utility.

NOW THEREFORE BE IT RESOLVED BY THE BOARD OF TRUSTEES OF THE ELDRIDGE ELECTRIC AND WATER UTILITY:

The following rate structure shall become effective February 1st, 2024.

1. Rates for water consumption shall be as follows:

0 up to and including 2,000 gallons	\$10.41 (minimum bill)
From 2,100 up to and including 100,000 gallons	\$0.52 per 100 gallons
Over 100,000 gallons	\$0.47 per 100 gallons

2. All resolutions in conflict with this resolution are hereby repealed.

PASSED AND APPROVED THIS 5th DAY OF DECEMBER, 2023.

ATTEST:

Brock Kroeger, Chairman

Michael Anderson, Secretary

Laboratory Report

Eldridge, City of
 Jake Rowe
 305 North 3rd Street
 Eldridge, IA 52748

Date Received: 11/07/23 15:01
Date Reported: 11/29/23 17:49
Project: PWS ID # IA8230008 Eldridge
 Send Invoice to AP

Analyte	Result	Units	Analyzed	Analyst	Method	Notes
Sample ID: 800 Rustic View Ct - Routine Grab			Date Sampled: 11/07/23 14:10	Date Received: 11/07/23 15:01		
Lab No.: 23K0746-01			Sampled by: Eldridge Personnel			

Classical Chemistry Parameters

Total Coliforms	Negative	MPN/100 mL	11/07/23 15:19	ad	SM 9223B	
Field Chlorine	2.09	mg/L	11/07/23 14:10	Eldridge I	SM 4500 Cl G	

Analyte	Result	Units	Analyzed	Analyst	Method	Notes
Sample ID: 305 N 3rd St - Routine Grab			Date Sampled: 11/06/23 11:13	Date Received: 11/07/23 15:01		
Lab No.: 23K0746-02			Sampled by: Eldridge Personnel			

Classical Chemistry Parameters

Total Coliforms	Negative	MPN/100 mL	11/07/23 15:19	ad	SM 9223B	
Field Chlorine	3.62	mg/L	11/06/23 11:13	Eldridge I	SM 4500 Cl G	

Analyte	Result	Units	Analyzed	Analyst	Method	Notes
Sample ID: 821 W Donahue St - Routine Grab			Date Sampled: 11/06/23 11:40	Date Received: 11/07/23 15:01		
Lab No.: 23K0746-03			Sampled by: Eldridge Personnel			

Classical Chemistry Parameters

Total Coliforms	Negative	MPN/100 mL	11/07/23 15:19	ad	SM 9223B	
Field Chlorine	3.48	mg/L	11/06/23 11:40	Eldridge I	SM 4500 Cl G	

Analyte	Result	Units	Analyzed	Analyst	Method	Notes
Sample ID: 500 W LeClaire Rd - Routine Grab			Date Sampled: 11/06/23 14:13	Date Received: 11/07/23 15:01		
Lab No.: 23K0746-04			Sampled by: Eldridge Personnel			

Classical Chemistry Parameters

Total Coliforms	Negative	MPN/100 mL	11/07/23 15:19	ad	SM 9223B	
-----------------	----------	------------	----------------	----	----------	--

Analysis Certified by:



Amy Dobbela For Randall Wanke, Laboratory Director

Randal Wanke, Laboratory Director

Eldridge, City of 305 North 3rd Street Eldridge IA, 52748	Project: PWS ID # IA8230008 Eldridge Send Invoice to AP Client Contact: Jake Rowe	Reported: 11/29/23 17:49
---	---	------------------------------------

Field Chlorine	3.77	mg/L	11/06/23 14:13	Eldridge I	SM 4500 CI G
----------------	------	------	----------------	------------	--------------

Analyte	Result	Units	Analyzed	Analyst	Method	Notes
---------	--------	-------	----------	---------	--------	-------

Sample ID: 914 W Hickory St - Routine Grab **Date Sampled: 11/06/23 14:36** **Date Received: 11/07/23 15:01**
Lab No.: 23K0746-05 **Sampled by: Eldridge Personnel**

Classical Chemistry Parameters

Total Coliforms	Negative	MPN/100 mL	11/07/23 15:19	ad	SM 9223B
Field Chlorine	3.33	mg/L	11/06/23 14:36	Eldridge I	SM 4500 CI G

Analyte	Result	Units	Analyzed	Analyst	Method	Notes
---------	--------	-------	----------	---------	--------	-------

Sample ID: 2199 E Lomar St - Routine Grab **Date Sampled: 11/07/23 12:56** **Date Received: 11/07/23 15:01**
Lab No.: 23K0746-06 **Sampled by: Eldridge Personnel**

Classical Chemistry Parameters

Total Coliforms	Negative	MPN/100 mL	11/07/23 15:19	ad	SM 9223B
Field Chlorine	1.79	mg/L	11/07/23 12:56	Eldridge I	SM 4500 CI G

Analyte	Result	Units	Analyzed	Analyst	Method	Notes
---------	--------	-------	----------	---------	--------	-------

Sample ID: 105 E LeClaire Rd - Routine Grab **Date Sampled: 11/07/23 13:09** **Date Received: 11/07/23 15:01**
Lab No.: 23K0746-07 **Sampled by: Eldridge Personnel**

Classical Chemistry Parameters

Total Coliforms	Negative	MPN/100 mL	11/07/23 15:19	ad	SM 9223B
Field Chlorine	3.79	mg/L	11/07/23 13:09	Eldridge I	SM 4500 CI G

Analyte	Result	Units	Analyzed	Analyst	Method	Notes
---------	--------	-------	----------	---------	--------	-------

Sample ID: 120 N Scott Park Rd - Routine Grab **Date Sampled: 11/07/23 14:48** **Date Received: 11/07/23 15:01**
Lab No.: 23K0746-08 **Sampled by: Eldridge Personnel**

Classical Chemistry Parameters

Total Coliforms	Negative	MPN/100 mL	11/07/23 15:19	ad	SM 9223B
Field Chlorine	1.00	mg/L	11/07/23 14:48	Eldridge I	SM 4500 CI G

N-1 Negative
 _A Bacteria Absent

Utility Bills Payable for December 5, 2023

TOTAL CHECKS	\$55,538.97
MidAmerican Wire Transfer- WS4 - Louisa energy charge - CMMPA	\$116,942.20
Credit Cards	\$0.00
PAYROLL November 25, 2023	\$29,970.52
TOTAL	\$202,451.69

CREDIT CARDS

VENDOR SET: 01 City of Eldridge

BANK: * ALL BANKS

DATE RANGE:11/20/2023 THRU 11/30/2023

VENDOR I.D.	NAME	STATUS	CHECK DATE	AMOUNT	DISCOUNT	CHECK NO	CHECK STATUS	CHECK AMOUNT
001493	JOHNSON CONTROLS SECURITY SOLU							
	C-CHECK		11/30/2023			225658		1,246.01CR

* * T O T A L S * *

	NO	INVOICE AMOUNT	DISCOUNTS	CHECK AMOUNT
REGULAR CHECKS:	0	0.00	0.00	0.00
HAND CHECKS:	0	0.00	0.00	0.00
DRAFTS:	0	0.00	0.00	0.00
EFT:	0	0.00	0.00	0.00
NON CHECKS:	0	0.00	0.00	0.00
VOID CHECKS:	1	VOID DEBITS 0.00		
		VOID CREDITS 1,246.01CR	1,246.01CR	0.00

TOTAL ERRORS: 0

VENDOR SET: 01	BANK:	TOTALS:	NO	INVOICE AMOUNT	DISCOUNTS	CHECK AMOUNT
			1	1,246.01CR	0.00	0.00
BANK:		TOTALS:	1	1,246.01CR	0.00	0.00

VENDOR SET: 01 City of Eldridge
 BANK: 00 FIRST CENTRAL UTILITY
 DATE RANGE: 11/20/2023 THRU 11/30/2023

VENDOR I.D.	NAME	STATUS	CHECK DATE	AMOUNT	DISCOUNT	CHECK NO	CHECK STATUS	CHECK AMOUNT
002648	AUXIANT							
I-202311294110	CLAIM FUNDING	D	11/22/2023			000712		
821 5-630-6184	UTILITY INSURANCE REIMBURSEMENT CLAIM FUNDING			2,418.17				2,418.17
1	SOMMERS, ROBERT							
I-000202311274108	US REFUND	R	11/27/2023			225648		
630 2033	DEPOSIT REFUNDS PAYABLE	01-8138-02		84.64				84.64
000459	U.S. POST OFFICE							
I-202311294122	POSTAGE	R	11/29/2023			225649		
630 5-820-6508	POSTAGE			950.61				950.61
002031	ACCESS SYSTEMS LEASING							
I-35328999U	CITY SHOP COPIER LEASE	R	11/30/2023			225650		
630 5-820-6310	B & G MATERIAL			94.59				
I-3574597U	CITY HALL COPIER LEASE	R	11/30/2023			225650		
630 5-820-6310	B & G MATERIAL			296.72				391.31
000131	CINTAS CORPORATION							
I-4175557028U	CITY SHOP MATS	R	11/30/2023			225651		
630 5-820-6310	B & G MATERIAL			67.88				
I-4175557153U	MATS	R	11/30/2023			225651		
630 5-820-6310	B & G MATERIAL			45.11				112.99
002442	COBRA HELP							
I-299855	ACTIVE INSURED EMPLOYEES	R	11/30/2023			225652		
821 5-630-6184	UTILITY INSURANCE REIMBURSEMENT ACTIVE INSURED EMPLO			10.95				10.95
000499	EASTERN IOWA TIRE							
I-100151205	UNIT 81	R	11/30/2023			225653		
630 5-820-6332	VEHICLE MAINTENANCE	UNIT 81		84.00				84.00
000125	FLETCHER-REINHARDT CO.							
I-S1301508.016	ST LIGHT POLES	R	11/30/2023			225654		
630 5-820-67811	CAPITAL PROJECTS			13,370.82				
630 5-820-6560	INTO INVENTORY			1,671.24				
I-S1301508.020	STREET LIGHT POLES.	R	11/30/2023			225654		
630 5-820-6560	INTO INVENTORY			1,671.34				16,713.40
000146	HACH CO.							
I-13814119	FLUORIDE	R	11/30/2023			225655		
600 5-810-6451	WATER TESTING	FLUORIDE		399.48				399.48

VENDOR SET: 01 City of Eldridge
 BANK: 00 FIRST CENTRAL UTILITY
 DATE RANGE: 11/20/2023 THRU 11/30/2023

VENDOR I.D.	NAME	STATUS	CHECK DATE	AMOUNT	DISCOUNT	CHECK NO	CHECK STATUS	CHECK AMOUNT
003226	HAWKINS INC.							
I-6635937	CHLORINE	R	11/30/2023			225656		
600 5-810-6501	TREATMENT MATERIALS	CHLORINE		1,572.57				1,572.57
000228	IOWA ONE CALL							
I-256165	LOCATES	R	11/30/2023			225657		
630 5-820-6450	OTHER CONTRACTED SERVICES	LOCATES		123.30				123.30
001493	JOHNSON CONTROLS SECURITY SOLU							
I-38091100 A	BILLING ADJ, SERVICE CHARGES	V	11/30/2023			225658		
I-39499782	QUARTERLY BILLING	V	11/30/2023			225658		1,246.01
001493	JOHNSON CONTROLS SECURITY SOLU							
M-CHECK	JOHNSON CONTROLS SECURITVOIDED	V	11/30/2023			225658		1,246.01CR
000777	MENARDS							
I-22606	DOOR	R	11/30/2023			225659		
600 5-810-6310	B & G MATERIAL	DOOR		462.00				462.00
002608	MERSCHMAN HARDWARE							
I-51525	BATTERY	R	11/30/2023			225660		
600 5-810-6310	B & G MATERIAL	BATTERY		17.99				
I-51584	TUBING CUTTER	R	11/30/2023			225660		
600 5-810-6765	MINOR PROJECTS	TUBING CUTTER		18.99				
I-51678	COUPLE	R	11/30/2023			225660		
600 5-810-6310	B & G MATERIAL	COUPLE		11.97				48.95
001512	MIDAMERICAN ENERGY COMPANY							
I-546193282	UTILITIES	R	11/30/2023			225661		
600 5-810-6371	UTILITIES			14.08				
600 5-810-6371	UTILITIES			12.49				
600 5-810-6371	UTILITIES			24.60				
630 5-820-6371	UTILITIES			53.02				
600 5-810-6371	UTILITIES			235.93				
600 5-810-6371	UTILITIES			16.71				356.83
002730	NERC							
I-30400	ASSESSMENTS	R	11/30/2023			225662		
630 5-820-6416	DUES AND ASSESSMENTS	ASSESSMENTS		698.60				698.60
003828	QC ANALYTICAL SERVICES LLC							
I-2311225	COLIFORM	R	11/30/2023			225663		
600 5-810-6451	WATER TESTING	COLIFORM		200.00				200.00

VENDOR SET: 01 City of Eldridge
 BANK: 00 FIRST CENTRAL UTILITY
 DATE RANGE: 11/20/2023 THRU 11/30/2023

VENDOR I.D.	NAME	STATUS	CHECK DATE	AMOUNT	DISCOUNT	CHECK NO	CHECK STATUS	CHECK AMOUNT
000254	QUAD CITIES TAS							
I-231110061U	ANSWERING SERVICES	R	11/30/2023			225664		
630 5-820-6450	OTHER CONTRACTED SERVICES	ANSWERING SERVICES		65.80				65.80
000935	RESCO							
I-3012536	JH TRANSFORMER	R	11/30/2023			225665		
630 5-820-6507	OPERATING SUPPLIES & MATERIALS	JH TRANSFORMER		24,900.00				
I-3013262	GRINDER	R	11/30/2023			225665		
630 5-820-6512	TOOLS	GRINDER		243.84				25,143.84
001982	SHARED IT INC							
I-10971U	IT SERVICES	R	11/30/2023			225666		
600 5-810-6373	TELEPHONE & INTERNET	IT SERVICES		140.55				
630 5-820-6373	TELEPHONE & INTERNET	IT SERVICES		140.55				281.10
002897	STAPLES							
I-80272416994U	SUPPLIES	R	11/30/2023			225667		
630 5-820-6310	B & G MATERIAL	SUPPLIES		100.09				100.09
001505	STUART C IREY CO							
I-S013810877.001	HOT STICK CLEANING	R	11/30/2023			225668		
630 5-820-6450	OTHER CONTRACTED SERVICES	HOT STICK CLEANING		5,587.81				5,587.81
002733	US POSTAL SERVICE (CMRS-FP)							
I-202311294119	POSTAGE	R	11/30/2023			225669		
630 5-820-6508	POSTAGE	POSTAGE		500.00				500.00
000691	VERIZON WIRELESS							
I-9948903578U	UTILITY CELULAR	R	11/30/2023			225670		
630 5-820-6373	TELEPHONE & INTERNET	UTILITY CELULAR		132.85				
600 5-810-6373	TELEPHONE & INTERNET	UTILITY CELULAR		149.97				282.82
003162	WHITE CAP, LP							
I-50024552786	MASTER LOCK	R	11/30/2023			225671		
630 5-820-6560	INTO INVENTORY	MASTER LOCK		916.56				916.56
001493	JOHNSON CONTROLS SECURITY SOLU							
I-39499782-2	QUARTERLY BILLING	R	11/30/2023			225672		
600 5-810-6213	DUES AND LICENSES	QUARTERLY BILLING		451.32				451.32

VENDOR SET: 01 City of Eldridge
 BANK: 00 FIRST CENTRAL UTILITY
 DATE RANGE: 11/20/2023 THRU 11/30/2023

VENDOR I.D.	NAME	STATUS	CHECK DATE	AMOUNT	DISCOUNT	CHECK NO	CHECK STATUS	CHECK AMOUNT
* * T O T A L S * *								
		NO		INVOICE AMOUNT		DISCOUNTS		CHECK AMOUNT
	REGULAR CHECKS:	24		56,784.98		0.00		55,538.97
	HAND CHECKS:	0		0.00		0.00		0.00
	DRAFTS:	1		2,418.17		0.00		2,418.17
	EFT:	0		0.00		0.00		0.00
	NON CHECKS:	0		0.00		0.00		0.00
	VOID CHECKS:	0	VOID DEBITS	0.00				
			VOID CREDITS	1,246.01CR		1,246.01CR		0.00

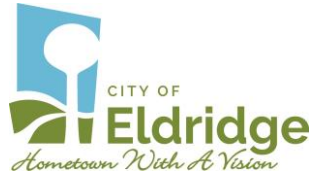
TOTAL ERRORS: 0

** G/L ACCOUNT TOTALS **

G/L ACCOUNT	NAME	AMOUNT
600 5-810-6213	DUES AND LICENSES	451.32
600 5-810-6310	B & G MATERIAL	491.96
600 5-810-6371	UTILITIES	303.81
600 5-810-6373	TELEPHONE & INTERNET	290.52
600 5-810-6451	WATER TESTING	599.48
600 5-810-6501	TREATMENT MATERIALS	1,572.57
600 5-810-6765	MINOR PROJECTS	18.99
	*** FUND TOTAL ***	3,728.65
630 2033	DEPOSIT REFUNDS PAYABLE	84.64
630 5-820-6310	B & G MATERIAL	604.39
630 5-820-6332	VEHICLE MAINTENANCE	84.00
630 5-820-6371	UTILITIES	53.02
630 5-820-6373	TELEPHONE & INTERNET	273.40
630 5-820-6416	DUES AND ASSESSMENTS	698.60
630 5-820-6450	OTHER CONTRACTED SERVICES	5,776.91
630 5-820-6507	OPERATING SUPPLIES & MATERIALS	24,900.00
630 5-820-6508	POSTAGE	1,450.61
630 5-820-6512	TOOLS	243.84
630 5-820-6560	INTO INVENTORY	4,259.14
630 5-820-67811	CAPITAL PROJECTS	13,370.82
	*** FUND TOTAL ***	51,799.37
821 5-630-6184	UTILITY INSURANCE REIMBURSEMENT	2,429.12
	*** FUND TOTAL ***	2,429.12

VENDOR SET: 01 City of Eldridge
BANK: 00 FIRST CENTRAL UTILITY
DATE RANGE:11/20/2023 THRU 11/30/2023

VENDOR I.D.	NAME	STATUS	CHECK DATE	AMOUNT	DISCOUNT	CHECK NO	CHECK STATUS	CHECK AMOUNT
				INVOICE AMOUNT	DISCOUNTS			CHECK AMOUNT
VENDOR SET: 01	BANK: 00	TOTALS:	25	57,957.14	0.00			57,957.14
BANK: 00	TOTALS:		25	57,957.14	0.00			57,957.14
REPORT TOTALS:			25	57,957.14	0.00			57,957.14



Resolution 2023-08 E & W

A Resolution Approving Changes To The Regularly Scheduled Meeting Dates For The 2024 Calendar Year.

WHEREAS, The Utility Board holds their regularly scheduled meetings on the first and third Tuesday of the month, and;

WHEREAS, The Utility Board wishes to make changes to the scheduled meeting dates for the 2024 calendar year.

NOW THEREFORE BE IT RESOLVED BY THE BOARD OF TRUSTEES OF THE ELDRIDGE ELECTRIC AND WATER UTILITY:

1. The regularly scheduled meeting on October 1st, 2024, will be moved to October 8th, 2024.
2. The regularly scheduled meeting on October 15th, 2024, will be moved to October 22nd, 2024.

PASSED AND APPROVED THIS 5th DAY OF December 2023.

ATTEST:

Brock Kroeger, Chairman

Michael Anderson, Secretary